

**2025-26**

UNIFORMS



THE LISBOAN

INTERNATIONAL SCHOOL



## **A Shared Look, A Shared Identity**

We see our uniform as more than clothing - it's a symbol of belonging and our shared values. Wearing the school uniform helps foster a sense of unity and pride, creating a strong identity amongst our community.

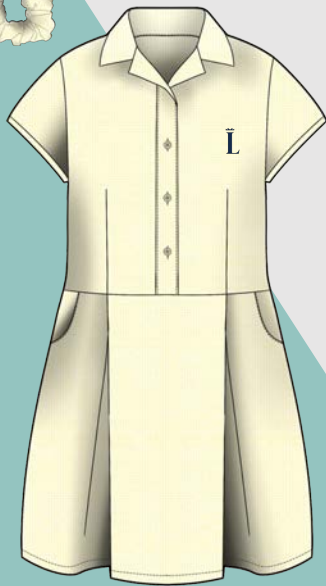
All students from Nursery classes through Year 10 (School Year 2025-26) are expected to wear the school uniform every day - it's mandatory for all students. To simplify, we offer a unified concept for daily wear, allowing students to mix and match various pieces.

# Early Years

Nursery (FS1) and Reception (FS2)

NAVY KNITWEAR

YELLOW SEERSUCKER CHECK DRESS



OPTION TO ADD COTTON UNDER SHORTS

CARDIGAN



LONG SLEEVE



SLEEVELESS



ANKLE OR KNEE SOCKS  
White or Blue (available in store)



CHINO SHORT  
PULL UP - ELASTICATED BACK



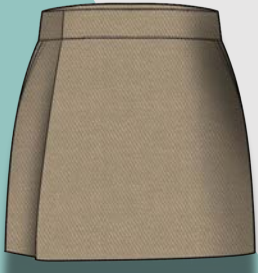
CHINO TROUSER  
PULL UP - ELASTICATED BACK

# Primary (Girls)

Year 1 – Year 6

NAVY KNITWEAR

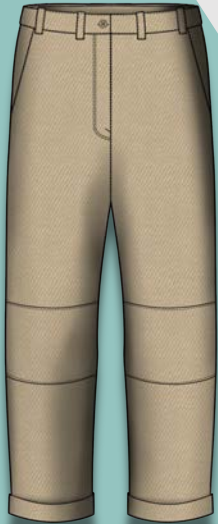
CHINO SKORT  
PULL UP – ELASTICATED BACK



CHINO SHORT  
PULL UP – ELASTICATED BACK



CHINO TROUSER  
PULL UP – ELASTICATED BACK



CARDIGAN



LONG SLEEVE



SLEEVELESS



ANKLE OR KNEE SOCKS  
White or Blue (available in store)

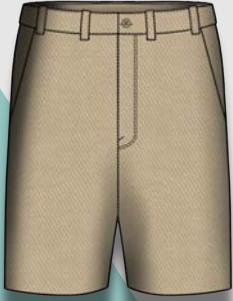


# Primary (Boys)

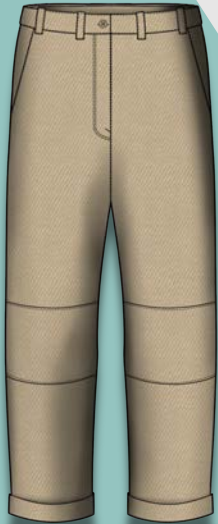
Year 1 – Year 6

NAVY KNITWEAR

CHINO SHORT  
PULL UP – ELASTICATED BACK



CHINO TROUSER  
PULL UP – ELASTICATED BACK



CARDIGAN



LONG SLEEVE



SLEEVELESS



ANKLE OR KNEE SOCKS  
White or Blue (available in store)

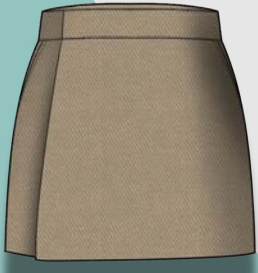


# Secondary (Girls)

Year 7 – Year 10

NAVY KNITWEAR

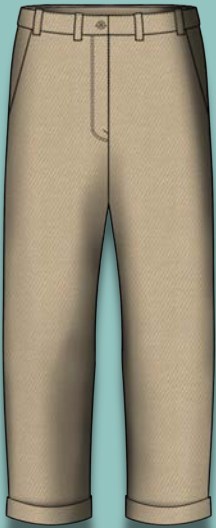
CHINO SKORT



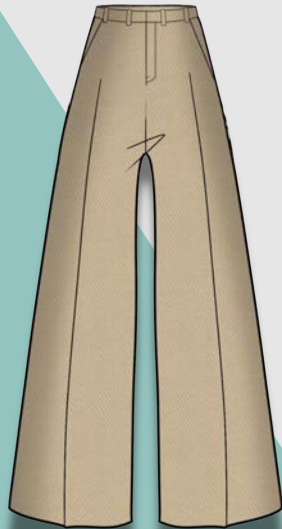
CHINO SHORT



CHINOS



WIDE LEG TROUSERS



CARDIGAN



LONG SLEEVE



SLEEVELESS



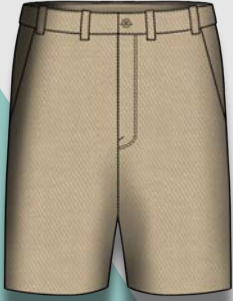
ANKLE OR KNEE SOCKS  
White or Blue (available in store)



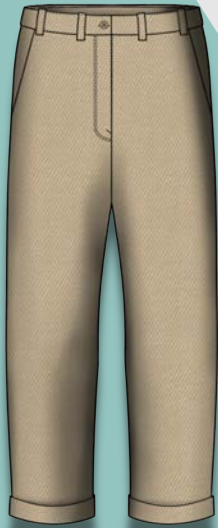
# Secondary (Boys)

Year 7 – Year 10

CHINO SHORT  
PULL UP – ELASTICATED BACK



CHINO TROUSER  
PULL UP – ELASTICATED BACK



LONG SLEEVE



SLEEVELESS



ANKLE OR KNEE SOCKS  
White or Blue (available in store)





# Sports - PE Days

## All Ages

As the new Physical Education (PE) kit will only be available in October, we kindly ask all students to wear navy blue bottoms (shorts or trousers) and a white top (T-shirt or long sleeve) on PE days until the kit is ready.

Thank you for your understanding and cooperation.

**Sep-Oct 2025**  
(Bring your own)

NAVY BLUE TROUSERS



WHITE TSHIRT



NAVY BLUE SHORTS



**Nov 2025**  
(The Lisbon PE Kit)





# Accessories



CAP



BUCKET HAT

Mandatory for Nursery and Reception



ANKLE OR KNEE SOCKS

White or Blue (available in store)



NAVY HOODIE



TEAL HOODIE



SHOES WITH VELCRO  
OR LACES - Optional



EARLY YEARS

Mandatory BACKPACK



PRIMARY & SECONDARY

Optional BACKPACK

# IMPORTANT GUIDELINES

## DAILY SHOES

Should be plain navy-blue shoes to match the school uniform. Shoes must be flat or low-top, comfortable, and supportive for daily walking and play. A rubber sole in natural brown/gum is preferred (white soles are also acceptable).

Velcro fastenings are ideal for younger children; laces are suitable for older children. Shoes should be made of leather, canvas or other durable easy-to-clean materials.

Please avoid non navy-blue colour shoes with cartoon characters, bright colours, large logos, as well as boots, sandals, or open-toe styles.

If your child requires medical or orthopaedic footwear, please notify the school in advance.

## SPORTS SHOES

Should be plain white exercise shoes that are comfortable and suitable for physical activity. They must provide good support and cushioning to protect children's feet during running, jumping, and other movements. Velcro or lace fastenings are both acceptable, depending on the child's age and ability to tie laces independently. Please avoid shoes with bright colours, patterns, flashing lights, or large brand logos.

## STRICTLY PROHIBITED

PE Uniform outside PE Days

Jeans

Boots (on the outside of trousers or with skirts/shorts)

Multi-coloured shoes

Socks other than plain white or navy

Tennis shoes, boots or sandals with Daily Uniform

Sweatshirt with Daily Uniform



## Where to Buy?

All school uniforms are available exclusively through our official partner, [TOGS Uniforms](#).

### Online

[www.togsuniformes.com](http://www.togsuniformes.com)  
[togs@togsuniformes.com](mailto:togs@togsuniformes.com)

Delivery can be arranged either to:

- Home
- Physical Shop
- School (deliveries take place once per week).

### Lisbon Shop (Miraflores)

Avenida das Túlipas, nº 27B,  
1495-161 Algés

Phone: +351 214837187  
WhatsApp: +351 932666007

Opening hours:  
Mon–Fri: 10am–6:30pm  
Sat: 10am–1pm

### Cascais Shop (Alcabideche)

Rua dos Cheinhos 118, 2645-  
106 Alcabideche

Phone: +351 214837187  
WhatsApp: +351 912475689

Opening hours:  
Mon–Fri: 10am–6:30pm Sat:  
10am–1pm



**2025-26**

UNIFORMS



THE LISBOAN

INTERNATIONAL SCHOOL